



# EXCELSIOR

HOMES WEST, INC.

*Since 1973*

Your Modular & Manufactured Home Experts



[excelsiorhomesinc.com](http://excelsiorhomesinc.com) | 320.587.4990



# Your Home Partner

## Minnesota Modular & Manufactured Home Experts Since 1973

For more than 50 years, Excelsior Homes of Hutchinson, Minnesota has been a family owned and operated business, specializing in helping people like you to find the perfect modular or manufactured home. Over the years, our company has grown and prospered as a Minnesota modular and manufactured home dealer, installer, and contractor as we support customers by offering quality homes, expert advice, extensive construction options, and the best service around.

Together with our manufacturing partners, Schult Homes of Redwood Falls, Minnesota, and partners Highland Homes of Worthington, MN and Skyline Homes (both Champion Homes brands), and Stratford Homes of Stratford, Wisconsin, we offer a variety of home styles and options. Our company has the resources to sell, deliver, and complete homes throughout the state of Minnesota and into surrounding states, including North Dakota, South Dakota, and Wisconsin.

*“Highly recommend Excelsior Homes to anyone hands down! We visited other home dealers in the state and went with Excelsior in the end. They were the only ones to return phone calls, sit down for a conversation, and make every step of the process easy to follow.”*

*— Sarah Reyes*

## *We have several models on display to tour!*

*Please visit our location in Hutchinson and tour our beautifully decorated model homes. No appointment necessary.*



# *Meet the Excelsior Homes Family*

Two generations working together to create your next home

## **Jeff & Sandra Munsell, Founders**

After building the business from the ground up in 1973, founders Jeff and Sandra devoted 50 years to establishing their company's reputation through quality products, unmatched service, and long-term, trusting relationships with customers. Having successfully grown the company over five decades, they have now retired and passed ownership to their children—their son Beau Munsell and their daughter and son-in-law, Jessica and Jason Verhasselt—ensuring their legacy continues into the next generation.

---



## **Beau Munsell, Owner, CEO, & President**

Beau's experience in the modular and manufactured home industry started in high school, working alongside the Excelsior Homes service crew. After college, he joined the family business and learned the ins and outs of the industry. Beau leads the sales efforts, guiding customers through the process with expertise and care. He has the knowledge and skills to help customers build their dream homes.

---



## **Jason Verhasselt, Owner & Vice President**

With over several years of in-field construction experience, Jason joined the family business in January 2005. His role includes Vice President, general contractor, and service manager. Jason's construction training and experience helped him learn the modular and manufactured home industry quickly. His family believes in what they sell, living in their Schult modular home for over 20 years.

## **Jessica Verhasselt, Owner, CFO, & Office Manager**

With a degree in Elementary Education, joining the family business was not exactly the life path Jessica envisioned for herself, but she is happy that life has led her back home. Proud of her parent's business, she was thrilled to join the team and follow in their footsteps. Her role includes office manager, bookkeeper, web and social media marketing, interior designer/decorator, and more!





# Champion Homes

## Highland Homes

### Modular & Manufactured Homes

Champion Homes has served as a leader in the manufactured housing industry. Highland Homes is just one of the Champion Homes brands we offer. Highland Homes is located in Worthington, Minnesota, and is one of the largest modular homebuilders in North America. For more than 25 years, they have earned a reputation as a premier builder of high-quality modular and manufactured homes with innovative ideas, superior construction, and a commitment to satisfied customers.



## Skyline Homes

### Modular & Manufactured Homes

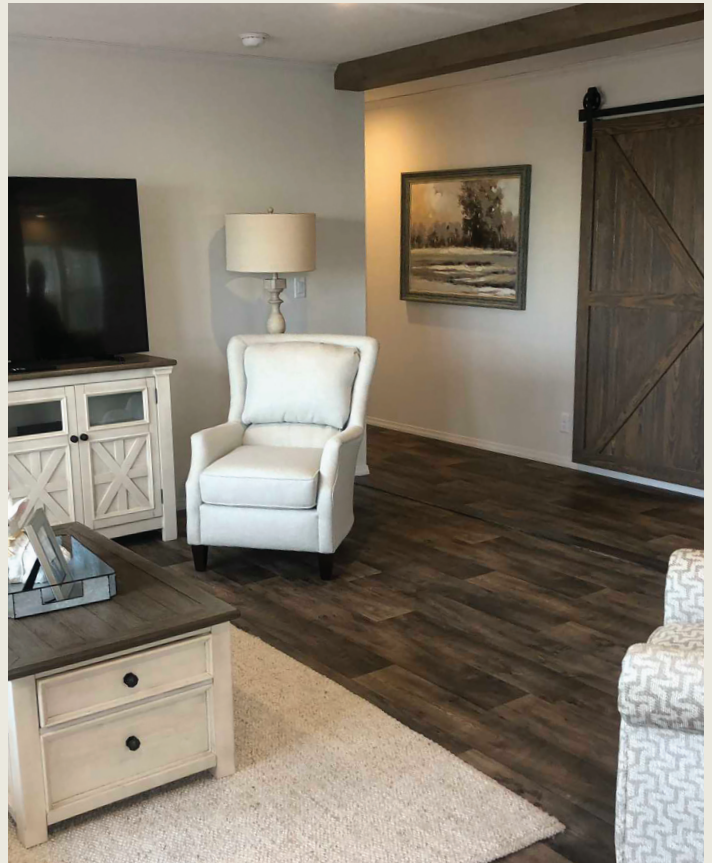
Skyline Homes, has been a trusted name in the manufactured and modular housing industry for decades. With a commitment to quality craftsmanship, innovative design, and energy efficiency, Skyline Homes has built a strong reputation for delivering homes that meet the highest standards. Located in Lancaster, Wisconsin, Skyline Homes takes pride in constructing durable, stylish, and affordable homes that cater to a variety of lifestyles.



# Schult Homes

## Modular & Manufactured Homes

Schult Homes is one of the finest modular and manufactured brands in the pre-fabricated home industry. Their first home was built in the factory in 1934 and has stood for high quality and affordability from the beginning. In 2004, Schult Homes of Redwood Falls became part of the Clayton Homes Family of Brands. The Schult Homes we sell are built locally in Redwood Falls, MN by America's oldest home manufacturer.



# Stratford Homes

## Custom Modular Homes

We are an independent Stratford Homes Builder. Stratford Homes are built in central Wisconsin. They've offered customizable system-built modular homes since 1973. Stratford Homes has unlimited home plans, including multi-level options, and options to choose from or customize any design to fit your needs. We oversee the entire process of designing your home, scheduling delivery and completing your home once it is placed on your foundation.



# Modular vs Manufactured

## The differences between modular and manufactured homes:

### Modular Homes

Also known as prefabricated, prefab, or factory stick built homes.

Modular homes are constructed to the same state, local, or regional building codes as a site-built home.

Built specifically for a basement or crawl space for placement on personal property.

Built in a controlled environment where no moisture touches the structure until completed.

Many styles to choose from such as; rambler, multi-level, cape cods, lofts, 2 story homes.

Typical Modular Home pricing includes home delivery, home installation onto foundation, main floor drywall, carpet, trim and siding completion. On-site construction such as excavation, foundation, plumbing & heating, septic, well, electrical, etc. are not included in the home price. Turn-key pricing may be available dependent on delivery location.

Usually less expensive per square footage than a site built home with the same longevity as its site-built counterpart, increasing in value over time.

Financing is obtained the same as new construction / site built homes, through a mortgage lender with the same interest rates.

We offer the following Modular Home Brands:



### Manufactured Homes

Also known as singlewide, doublewide, sectionals or mobile homes.

Built according to state construction standards act of 1976, or Housing & Urban Development (HUD) code. Displays certification label on each section of home.

Installed on frost piers, engineered slabs, or sometimes basements. Can be installed on personal property or rented/leased property such as mobile home parks or communities.

Built in a controlled environment where no moisture touches the structure until completed.

Many sizes and styles to choose from such as; single section, double section or triple section, but can only be one level.

Self-contained home with a furnace, water heater, ducts & plumbing all on the main floor. Typical Manufactured Home pricing includes home delivery, pier foundation, installation, home interior & exterior completion, air conditioner, and skirting. On-site construction services such as permit/inspection fees, utility connections and excavation are not included.

Generally, less expensive than modular homes. Affordable housing option.

Financing is obtained through a personal property loan or land/home packages. Your personal bank may be able to help you or a lender specific to manufactured homes.

We offer the following Manufactured Home Brands:







# Create Your Home

Want a home unique to you and your family? Customize your modular or manufactured home with us.

If you choose to customize your modular or manufactured home, Excelsior Homes offers plenty of options to fit into your budget and vision. You imagine it, we help make it a reality with our custom plans and options. Choose from standard floor plans or bring in your own ideas. There are many standard options to choose from and various upgrades available. Select colors to match the look and feel you want. Every situation is different. Once we gather your vision, location, budget, home plan, then accurate pricing for your home can be determined.

**Popular custom options include selecting the styles, colors, makes, models, and/or materials such as:**

- ▶ Flooring
- ▶ Lighting Fixtures/Skylights
- ▶ Cabinets
- ▶ Appliances
- ▶ Heating/Alternative/Fireplaces
- ▶ Windows/Doors
- ▶ Roofing
- ▶ Siding
- ▶ Kitchen & Bathroom
- ▶ Porches & Decks
- ▶ Garages

## *Offering home buyers a turn-key experience.*

Complete construction services are available to help with everything from excavation to electrical and everything in between. This may not be available in all areas. We are a general contractor in Minnesota and North Dakota. **Ask for pricing on your entire project today!**

**Are you ready? Some things to consider before receiving a custom quote:**

- ▶ Location – Where will you put your home? Do you own property or have a location in mind?
- ▶ Budget – Do you have a general idea of your estimated budget for building a new home?
- ▶ Home Plan – Are you looking for modular or manufactured? Have you picked out your home design and options?



**EXCELSIOR**

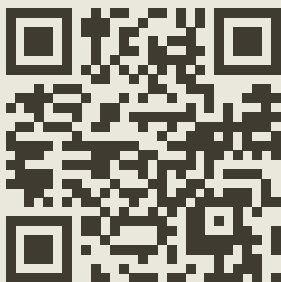
HOMES WEST, INC.

*Since 1973*

Dealer License: #MD001218

Building Contractor: #BC005417

Installer: #MI009368



**Location**

1355 Highway 7 West  
Hutchinson, MN 55350

**Contact Us**

Email: [info@excelsiorhomesinc.com](mailto:info@excelsiorhomesinc.com)  
Phone: 320-587-4990

**Business Hours**

Monday - Thursday: 8:00 am - 5:00 pm  
Friday: 8:00 am - 4:30 pm  
Saturday: 9:00 am - 2:00 pm